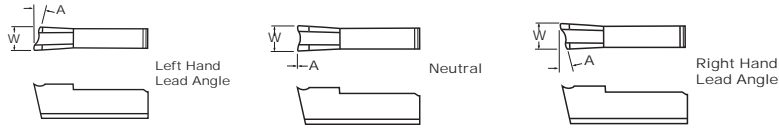


CUT OFF

FC SERIES CUT OFF



INSERT FC



	Uncoated	TiN Coated	AlTiN Coated	
	GP26	GP530	AC26	AC3
	C36		AC50	

■ Toolholders listed below

Description	EDP Code	Competitor Nomenclature	Insert Width	A	Hand	C36	GP26	GP530	AC26	AC3	AC50
FC-094-N	FC094N	507-140	.094 (2.39)	0°	N	●	●	●	●	●	●
FC-094-L-4	FC094L4	507-144	.094 (2.39)	4°	L	●	●	●	●	●	●
FC-094-L-12	FC094L12	507-152	.094 (2.39)	12°	L	●	●	●	●	●	●
FC-094-R-4	FC094R4	507-143	.094 (2.39)	4°	R	●	●	●	●	●	●
FC-094-R-12	FC094R12	507-151	.094 (2.39)	12°	R	●	●	●	●	●	●
FC-094-R-18	FC094R18	507-161	.094 (2.39)	18°	R	●	●	●	●	●	●
FC-125-N	FC125N	507-117	.125 (3.18)	0°	N	●	●	●	●	●	●
FC-125-L-4	FC125L4	507-129	.125 (3.18)	4°	L	●	●	●	●	●	●
FC-125-L-12	FC125L12	507-154	.125 (3.18)	12°	L	●	●	●	●	●	●
FC-125-R-4	FC125R4	507-128	.125 (3.18)	4°	R	●	●	●	●	●	●
FC-125-R-12	FC125R12	507-146	.125 (3.18)	12°	R	●	●	●	●	●	●
FC-125-R-18	FC125R18	507-155	.125 (3.18)	18°	R	●	●	●	●	●	●
FC-187-N	FC187N	507-116	.187 (4.75)	0°	N	●	●	●	●	●	●
FC-187-L-4	FC187L4	507-125/507-127	.187 (4.75)	4°	L	●	●	●	●	●	●
FC-187-R-4	FC187R4	507-124/507-126	.187 (4.75)	4°	R	●	●	●	●	●	●
FC-187-R-12	FC187R12	507-176	.187 (4.75)	12°	R	●	●	●	●	●	●

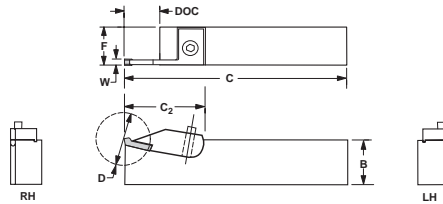
In an effort to improve our stock standard grade offering, there are periodic changes. Please see current price list for up-to-date grade offering.

- High performance choice in optimal conditions.
- ▲ Recommended grade under general conditions.

COMPETITOR'S GRADES	M40	M50	M43
Steel (Low to moderate speeds)	●		
Steel (Moderate to high speeds)			●
Stainless (Low to moderate speeds)		●	
Stainless (Moderate to high speeds)			●

FC SERIES

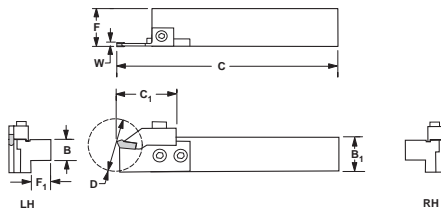
HOLDERS FCIVOR 1/2"



Description	EDP Code	Competitor Part No.	Max Dia. D	B	C	C2	F	Clamp Screw	CLAMP Description	D.O.C.	EDP Code	Competitor Part No.
FCIVOR-12M-2.38	9FCIR12M238	206-175	27.00	12.70	152.00	25.40	12.70	SSM65	CHR-FCI094	13.49	9HCHRFCI094	435-152
FCIVOR-12M-3.18	9FCIR12M318	206-145	27.00	12.70	152.00	25.40	12.70	SSM65	CHR-FCI125	13.49	9HCHRFCI125	435-130

HOLDERS FCVOR/L 1/2" & 3/4"

■ RH holders use RH components



Description	EDP Code	Competitor Nomenclature	D-Max	B	B1	C	C1	F	F1	Anvil Screw	Clamp Screw
FCVOR-080B	9FCR0800	206-179	41.28	12.70	19.05	114.30	35.05	25.40	11.68	SS84M	SSM91
FCVOL-080B	9FCL0800	206-180	41.28	12.70	19.05	114.30	35.05	25.40	11.68	SS84M	SSM91
FCVOR/L-1200B	9FCR/L1200	206-178	41.28	19.05	19.05	114.30	35.05	25.40	11.68	SS84M	SSM91

COMPONENT PARTS AVR-FCS Anvils



Description	EDP Code	Competitor Part No.	Width	D.O.C.
AVR-FCS094	911FC094	333-101	2.38	20.62
AVR-FCS125	911FC125	333-102	3.18	20.62
AVL-FCS094	910FC094	333-103	2.38	20.62
AVL-FCS125	910FC125	333-104	3.18	20.62

COMPONENT PARTS CHR-FCS Clamps



Description	EDP Code	Competitor Part No.	Width	D.O.C.
CHR-FCS094	9H1FCR094	435-154	2.38	20.62
CHR-FCS125	9H1FCR125	435-155	3.18	20.62
CHL-FCS094	9H1FCL094	435-156	2.38	20.62
CHL-FCS125	9H1FCL125	435-157	3.18	20.62



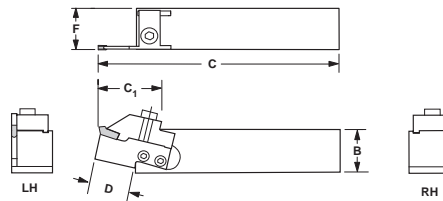
FC SERIES CUT OFF

HOLDERS

FCVOR/L

1" & 1-1/4"

■ RH holders use RH components



Description	EDP Code	Competitor Nomenclature	D	B	C	C ₁	F	Anvil Screw	Clamp Screw
FCVOR-1600D	9FCR1600D	206-141	20.62	25.40	152.40	38.10	31.75	SS82M	SSM83
FCVOL-1600D	9FCL1600D	206-142	20.62	25.40	152.40	38.10	31.75	SS82M	SSM83
FCVOR-2000D	9FCR2000D	206-143	20.62	31.75	152.40	38.10	38.10	SS82M	SSM83
FCVOL-2000D	9FCL2000D	206-144	20.62	31.75	152.40	38.10	38.10	SS82M	SSM83

COMPONENT PARTS

AVR-FCL Anvils



Description	EDP Code	Competitor Part No.	Width	D.O.C.
AVR-FCL094	901FC094	331-117	2.38	12.70
AVR-FCL125	901FC125	331-101	3.18	20.32
AVR-FCL187	901FC187	331-103	4.76	20.32
AVL-FCL094	900FC094	331-118	2.38	12.70
AVL-FCL125	900FC125	331-102	3.18	20.32
AVL-FCL187	900FC187	331-104	4.76	20.32

COMPONENT PARTS

CHR-FCL Clamps



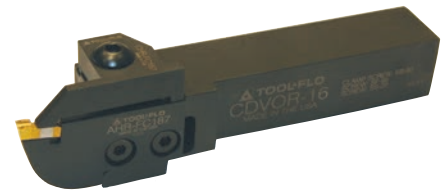
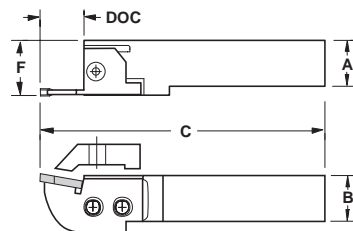
Description	EDP Code	Competitor Part No.	Width	D.O.C.
CHR-FCL094	9H0FCR094	435-142	2.38	12.70
CHR-FCL125/187	9H0FCR125/187	435-128	3.18 & 4.76	20.32
CHL-FCL094	9H0FCL094	435-143	2.38	12.70
CHL-FCL125/187	9H0FCL125/187	435-129	3.18 & 4.76	20.32

HOLDERS

CDVOR/L

1", 1-1/4", 1-1/2"

■ RH holders use RH components



Description	EDP Code	Insert Width	A	B	C	F	Clamp Screw	Anvil Screw
CDVOR-25M	92412500	27.00	25.00	25.00	*	31.39	SBM90	SFM95
CDVOL-25M	92312500	27.00	25.00	25.00	*	31.39	SBM90	SFM95
CDVOR-32M	92413200	27.00	32.00	32.00	*	44.30	SBM90	SFM95
CDVOL-40M	92414000	27.00	40.00	40.00	*	44.30	SBM90	SFM95

*Determined by the anvil

COMPONENT PARTS

AHR-FC Anvils



Description	EDP Code	D.O.C.
AHR-FC094	9150FC094	12.70
AHR-FC125	9150FC125	25.40
AHR-FC187	9150FC187	25.40
AHL-FC094	9151FC094	12.70
AHL-FC125	9151FC125	25.40
AHL-FC187	9151FC187	25.40

COMPONENT PARTS

CHR-FC Clamps



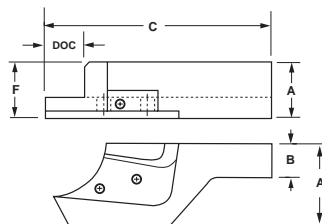
Description	EDP Code	D.O.C.
CHR-FC094	9HCHRFC094	12.70
CHR-FC125	9HCHRFC125	25.40
CHR-FC187	9HCHRFC187	25.40
CHL-FC094	9HCHLFC094	12.70
CHL-FC125	9HCHLFC125	25.40
CHL-FC187	9HCHLFC187	25.40

HOLDERS

FCEDVOR

1", 1-1/4"

■ RH holders use RH components listed on following page.

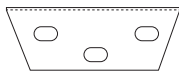
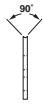


Description	EDP Code	Competitor Nomenclature	DOC	A	A ₁	B	F	C	Anvil Screw	Clamp Screw
FCEDVOR-1600D	9FCEDR1600D	206-116	38.10	44.93	56.49	25.40	44.70	152.40	SM-352	SBM-628
FCEDVOL-1600D	9FCEDL1600D	206-119	38.10	44.93	56.49	25.40	44.70	152.40	SM-352	SBM-628
FCEDVOR-2000D	9FCEDR2000D	206-121	38.10	48.23	56.49	31.75	48.01	152.40	SM-352	SBM-628
FCEDVOL-2000D	9FCEDL2000D	206-124	38.10	48.23	56.49	31.75	48.01	152.40	SM-352	SBM-628



COMPONENT PARTS

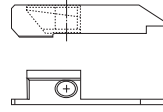
AVR/L-FCED Anvils



Description	EDP Code	D.O.C.
AVR/L-FCED125	902FCED125	38.10
AVR/L-FCED187	902FCED187	38.10

COMPONENT PARTS

CHR/L-FCED Clamps



Description	EDP Code	D.O.C.
CHR-FCED125	9H2FCEDR125	38.10
CHL-FCED125	9H2FCEDL125	38.10
CHR-FCED187	9H2FCEDR187	38.10
CHL-FCED187	9H2FCEDL187	38.10

FC SERIES

Recommended M/MIN & M/REV for Parting Applications

Workpiece Group	Uncoated	TiN PVD		AlTiN PVD		MM/REV
	C22	GP22	GP50	AC22	AC50	
Free Machining Carbon Steels	---	45.72 - 91.44	60.96 - 182.88	60.96 - 121.92	121.92 - 243.84	0.076-0.203
Plain Carbon Steels	---	45.72 - 91.44	60.96 - 182.88	60.96 - 121.92	121.92 - 243.84	0.076-0.203
Alloy Steels 190-330 HB	---	45.72 - 91.44	60.96 - 152.40	60.96 - 106.68	121.92 - 243.84	0.076-0.203
Alloy Steels 330-450 HB	---	45.72 - 91.44	60.96 - 137.16	60.96 - 106.68	121.92 - 228.60	0.076-0.203
Martensitic/Ferritic Stainless Steel 400 Series	---	45.72 - 91.44	60.96 - 152.40	60.96 - 121.92	106.68 - 213.36	0.076-0.203
Austenitic Stainless 300 Series	45.72 - 91.44	45.72 - 121.92	---	91.44 - 182.88	---	0.508-0.178
Gray Cast Iron 190-330 HB	30.48 - 106.68	45.72 - 121.92	---	91.44 - 182.88	---	0.508-0.178
Gray Cast Iron 330-450 HB	30.48 - 91.44	45.72 - 106.68	---	60.96 - 167.64	---	0.508-0.178
Alloy / Ductile Irons	---	45.72 - 91.44	60.96 - 152.40	76.20 - 137.16	91.44 - 213.36	0.076-0.203
Free Machining Aluminum Alloys	30.48 - 457.20	45.72 - 609.60	---	182.88 - 670.56	---	0.102-0.203
High-Silicon Aluminum Alloys	---	---	---	---	---	---
Copper / Zinc / Brass	30.48 - 154.00	45.72 - 213.36	---	91.44 - 274.32	---	0.102-0.203
Non-Metallics	30.48 - 304.80	45.72 - 457.20	---	106.68 - 365.76	---	0.102-0.203
High Temperature Alloys 200-260 HB	24.38 - 39.62	30.48 - 53.34	---	24.38 - 60.96	---	0.051-0.152
High Temperature Alloys 260-450 HB	15.24 - 30.48	24.38 - 45.72	---	24.38 - 53.34	---	0.051-0.152
Titanium Alloys (Ti 6Al-4V)	30.48 - 60.96	30.48 - 76.20	---	24.38 - 91.44	---	0.051-0.152

Bold print items denote the top choices for the materials listed, provided it can be machined within the M/MIN stated under the appropriate machining conditions. For the best performance in optimal machining conditions, select the grade that will provide you with the highest allowable M/MIN.