

TOOL-FLO
CR-5B75-4E
TF22675

TOOL-FLO
CR-5B75-4E
TF22675

TOOL-FLO
CR-5B75-4E
TF22675

TOOL-FLO
CR-5B75-4E
TF22675

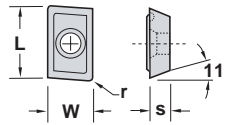
TOOL-FLO
LNCX 1806AZ-R11
ACS T7

MILLING



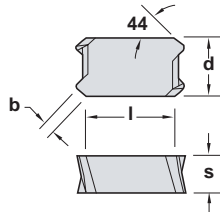
MILLING INSERTS

APKT



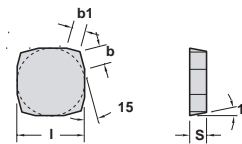
Description	EDP Code	L	W	s	r	GP201	AC202	AG6M	P56M	G55M	P5M	GP5	AC5
APKT 1003PDER-SCM	MAPKT1003SCM	10.49	6.68	3.48	0.48	●	●		●		●		

LNCX



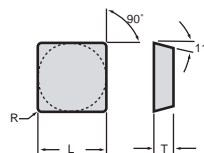
Description	EDP Code	l	d	s	b	GP201	AC202	AG6M	P56M	G55M	P5M	GP5	AC5
LNCX 1806AZ-L11	MLNCXL	18.77	10.01	6.35	2.16							●	●
LNCX 1806AZ-R11	MLNCXR	18.77	10.01	6.35	2.16							●	●

SEKN



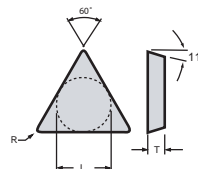
Description	EDP Code	l	s	b	b1	AG450	A460	AG501	P56M	G55M	P5M	GP5	AT5
SEKN 42AFSN	MSEKN425N	12.70	3.18	-	-							●	
SEKN 42AFSN-11	MSEKN425N11	12.70	3.18	-	-							●	
SEKN 42AFSN-HCM	MSEKN425NHCM	12.70	3.18	-	-							●	
SEKN 42AFSN-SCM	MSEKN425NSCM	12.70	3.18	-	-							●	
SEKN 53AFSN	MSEKN535N	15.88	4.78	-	-							●	
SEKN 53AFSN-11	MSEKN535N11	15.88	4.78	-	-							●	

SPG



Description	EDP Code	L	L	T	r	GP201	AT202	AG6M	P56M	G55M	P5M	GP5	AT5
SPG 422	MSG422	12.70	12.70	3.18	0.79							●	
SPG 423	MSG423	12.70	12.70	3.18	1.19							●	
SPG 633	MSG633	19.05	19.05	4.75	1.19							●	
SPG 634	MSG634	19.05	19.05	4.75	1.57							●	

TPG



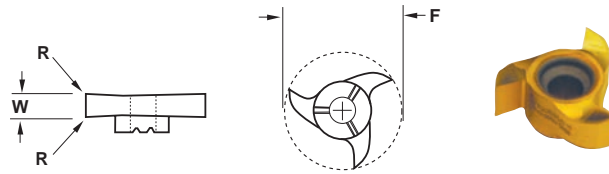
Description	EDP Code	l	T	R	C3	C56	AG6M	P56M	G55M	P5M	GP5	AT5
TPG 321	MTG321	15.75	3.18	0.38		●					●	
TPG 322	MTG322	15.75	3.18	0.79	●	●					●	
TPG 431	MTG431	22.00	4.75	0.38		●					●	
TPG 432	MTG432	22.00	4.75	0.79							●	
TPG 433	MTG433	22.00	4.75	1.19							●	



GROOVE MILLING INSERT

TFMG

Grooving

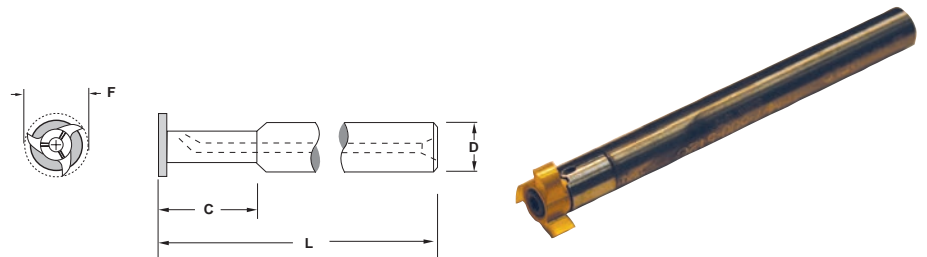


Description	EDP Code	W	D.O.C.	R	F	GP22
TFMG-039W	9MG039O3	0.99	4.50	-	21.69	●
TFMG-056W	9MG056O3	1.42	4.50	-	21.69	●
TFMG-062W	9MG062O3	1.57	4.50	0.20	21.69	●
TFMG-078W	9MG078O3	1.98	4.50	0.20	21.69	●
TFMG-094W	9MG094O3	2.39	4.50	0.20	21.69	●
TFMG-125W	9MG125O3	3.18	4.50	0.20	21.69	●
TFMG-187W	9MG187O3	4.75	4.50	0.20	21.69	●
TFMG-250W	9MG250O3	6.35	4.50	0.20	21.69	●

GROOVE MILLING HOLDER

TFM

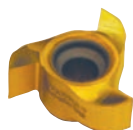
Carbide Shank



Description	EDP Code	C	L	D	F	Insert Screw
TFM-7-12M-100C	9CMI712M100	Straight shank	100mm	12mm	21.69	SDM25
TFM-7-12M-130C	9CMI712M130	Straight shank	130mm	12mm	21.69	SDM25
TFM-7-16M-42C	9CMI716M42	42mm	100mm	16mm	21.69	SDM25
TFM-7-16M-60C	9CMI716M60	60mm	130mm	16mm	21.69	SDM25
TFM-7-16M-85C	9CMI716M85	85mm	160mm	16mm	21.69	SDM25
TFM-7-500-394C	9CMI7500394	Straight shank	100.08	12.70	21.69	SDM25
TFM-7-500-512C	9CMI7500512	Straight shank	130.05	12.70	21.69	SDM25
TFM-7-625-165C	9CMI7625165	41.91	100.08	15.88	21.69	SDM25
TFM-7-625-236C	9CMI7625236	66.80	130.05	15.88	21.69	SDM25
TFM-7-625-335C	9CMI7625335	85.09	160.02	15.88	21.69	SDM25



Mill Grooving - TFMG



Workpiece Group	Recommended Speed & Feed rate - inch/rev (mm/rev)	
	Cutting Speed (m/min)	Feed Rate (m/t)
Free Machining Carbon Steels	182.88 - 213.36	0.25 - 0.41
Plain Carbon Steels	182.88 - 213.36	0.25 - 0.41
Alloy Steels 190-330 HB	106.68 - 137.16	0.25 - 0.41
Alloy Steels 330-450 HB	106.68 - 137.16	0.25 - 0.41
Martensitic/Ferritic Stainless Steel 400 Series	60.96 - 121.92	0.25 - 0.41
Austenitic Stainless 300 Series	106.68 - 167.64	0.25 - 0.41
Gray Cast Iron 190-330 HB	91.44 - 106.68	0.30 - 0.51
Gray Cast Iron 330-450 HB	91.44	0.30 - 0.51
Alloy / Ductile Irons	60.96 - 91.44	0.30 - 0.51
Free Machining Aluminum Alloys	152.40 - 701.04	0.30 - 0.51
High-Silicon Aluminum Alloys	137.16 - 274.32	0.30 - 0.51
Copper / Zinc / Brass	36.58 - 137.16	0.30 - 0.51
Non-Metallics	36.58 - 91.44	0.30 - 0.51
High Temperature Alloys 200-260 HB	30.48 - 76.20	0.10 - 0.25
High Temperature Alloys 260-450 HB	24.38 - 39.62	0.08 - 0.20
Titanium Alloys (Ti 6Al-4V)	24.38 - 39.62	0.08 - 0.20
Hardened Materials 48-65 HRC	---	---

Rigid ▶ Very Rigid*

* For not rigid set ups start at .0127 m/t

